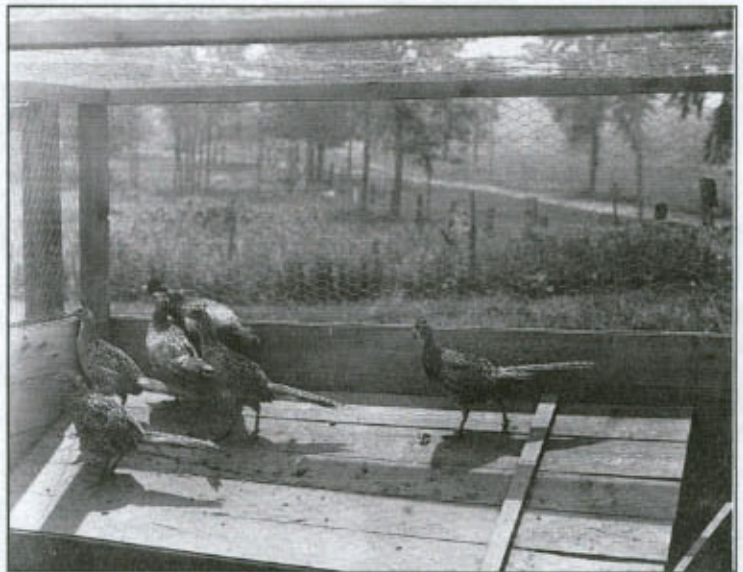


**Charlotte L. Everts Memorial Archives, Inc.
8 Meetinghouse Lane
Madison, Connecticut 06443
203 245 5667
Number 17**

**Game Farm
175 Copse Road**



*Main buildings of the
State Game Farm on
Copse Road in 1920*



*The pens where pheasants were
kept before they were released*

In 1914 the State of Connecticut purchased 47 acres of farmland on Copse Road to build a game farm to raise mallard ducks, wood ducks, and pheasants to be released into the forests of Connecticut. More land was added until the farm encompassed almost 200 acres. In 1919 the State bought land to build a fish hatchery to raise salmon to release in streams and rivers around the

state. The fish hatchery was located on the Hammonasset River at a place called Duck Holes.

At the Game Farm a large pond was constructed for the ducks to live in before as they laid eggs. Many large pens were built for the pheasants. Instead of letting the ducks and pheasants hatch their own eggs, the Game Farm kept a flock of 600 chickens whose job it was to hatch the eggs. One year the farm raised 3000 pheasants

Although the pheasants were kept in the pens the ducks were allowed to fly around wherever they wished. They seemed to think of the pond as their home and they rarely flew away. Wild ducks often landed in the pond also.

In addition to raising ducks and pheasants the Game also had a small zoo and a display of mounted animals including a 17 pound lobster. A large herd of 16 deer roamed the property. One deer was unusual because it was an albino, or white, deer. Other animals included golden pheasants, a skunk, a coyote, 2 foxes, and a raccoon.

In 1926 the State closed the Game Farm and sold the property. In 1934 the Grove School opened and has been operating ever since.

Directions: From center of Madison drive west toward Guilford turning right onto Copse Road where it intersects with the Boston Post Road at the green. Follow Copse Road keeping right before you reach the railroad overpass. At the stop sign turn left to continue on Copse Road. When you see the overpass for I-95, you will see the buildings of the Grove School on the left just before the overpass. The Grove school occupies the former site of the State Game Farm.

Please Note: The Grove School is private property. Please do not enter the grounds.