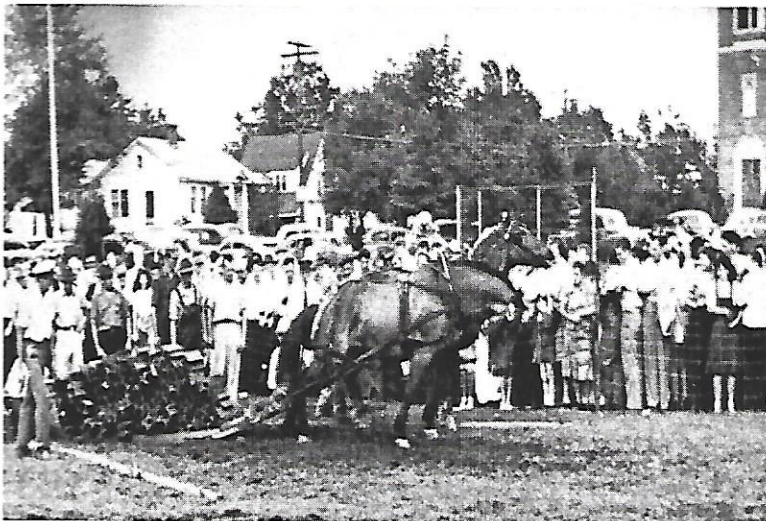


# The Charlotte L. Everts Memorial Archives, Inc.



## Collection Grows to 43,000 Items

### Future Farmers Fair Photos Among New Additions

The year 2008 was a period of remarkable growth for the Archives. During this time, CLEMA's collection grew from 40,000 to 43,000 items. We deeply appreciate everyone who made this accomplishment possible.

Among this year's many exciting additions are: photos of West Wharf in 1893, records of the Ecology Action Group, Levi Dingwall's diary, Merritt Cleaver's North Madison History Archives, Dr. John Lancer's World War I scrapbook, Norman Hall's Madison post cards and photos of the Future Farmers Fair.

Recently, we have added 100 linear feet of shelving to the vault. We ask CLEMA patrons to continue to be on the look out for Madison-related post cards, photos, maps, diaries, yearbooks, letters, scrapbooks and other archival materials. Your help will go a long way in assisting CLEMA with its mission of preserving Madison's past for present and future generations.

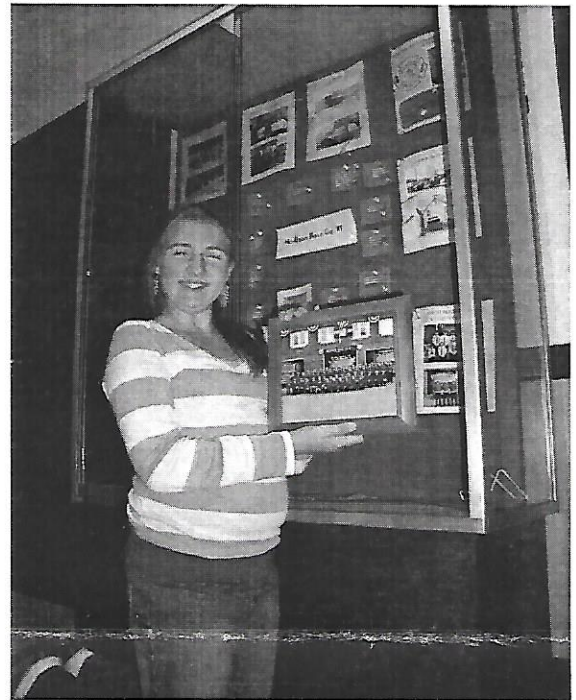
*(Left) A recent addition to CLEMA's collection is a set of Future Farmers Fair photos. A gift from the Dale Holdridge family, these images provide a look back at this popular September event that took place on Academy Street field from 1939 to 1957. Attracting visitors and exhibitors from across the state, the fair offered such highlights as 20-cent hot dogs, horse drawing contests and sheep judging. The fair's 19-year run ended when it outgrew the site and was moved to Durham.*

# Powered by Volunteers

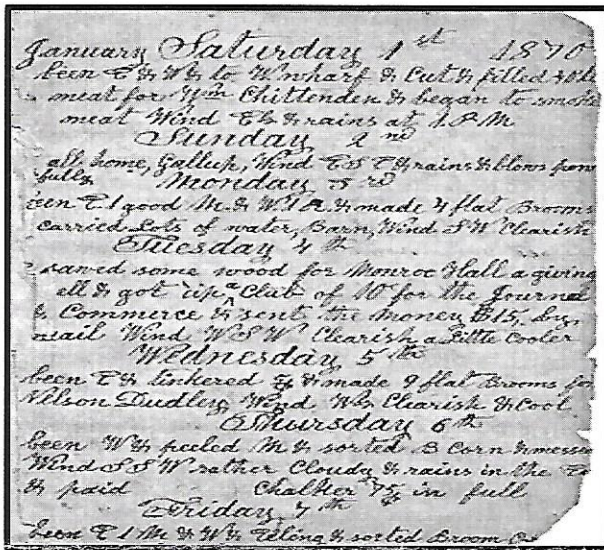
Did you know that CLEMA is run entirely by volunteers?

These dedicated individuals are our greatest resource. They assist with research, collect materials, create displays, enter data into the computer, give historical presentations, index map books, preserve items, process archival donations, transcribe documents and much more.

CLEMA thanks its many volunteers for their time and talent. If you are interested in becoming a volunteer, please call 245-5667.



*Volunteer Taylor Gerard finishes a display she created about Madison Hose Co. # 1.*



## Dear Diary

Among the diaries that were received this year was one penned by Levi Dingwall. Begun January 1, 1870, its pages contain a detailed account of this Madison farmer, stone-cutter and jack-of-all-trades. Sadly, it ends a few weeks after he sustains severe injuries from a fall at a quarry on September 4, 1871. Dingwall's house once stood at the present site of Dino's Auto Spa.

## Grand New Flag

CLEMA helped facilitate the effort to replicate and re-introduce Madison's town flag to the flag pole on the Green opposite Town Hall. On hand to see the replica fly for the first time were: Mark Feiner of Madison Public Works, Eileen Banisch, Executive Director of the Madison Chamber of Commerce and Al Miller, the designer of Madison's original town flag and the driving force behind the project.



# Congratulations Ray

CLEMA was thrilled to play a role in the heartwarming story of Ray Allen's graduation.

Late in 2007 Ray became so ill, it prompted his former daughter-in-law, Terry Duffy, to begin research for his obituary. At CLEMA, Terry learned Ray's education at Hand High School had been interrupted when he was drafted in 1943. Fortunately, Board Member Warner Lord knew of a law allowing World War II veterans to receive high school credit for their military service. He suggested she check it out. Terry did. Happily, Ray recovered. In June, the World War II veteran joined Hand's Class of 2008 and fulfilled his dream of receiving a high school diploma.



*A jubilant Ray Allen on Graduation Day*



## WW II Service Banner Replicated

Members of the "Greatest Generation" received a welcomed surprise when CLEMA Board Members unveiled a newly replicated World War II Service Banner at the Veterans Day ceremony on the Green.

The original banner was created in 1943 to honor Madison residents called to serve our country during WWII. It was displayed at "library corner," but over the years it was lost. Luckily, a photo existed upon which CLEMA could base a replica. The Sailbag Lady was selected for the project.

Like the original banner, the replica measures 9 feet by 20 feet. At the top is a gold star and the number "9," which remembers Madison servicemen who lost their lives. Below it is a blue star with the number "335," the total number of residents who served during WWII.

## Mission: Preservation

CLEMA is a repository for many civic organization's historical records and photos. If your group would like to learn more about this important program, please call the Archives at 245-5667.

*(Left) Women's Club of Madison Directors present CLEMA President Pam Landon (seated left) a check in appreciation of CLEMA preserving their Club's history.*





## “Wonderful West Wharf”

This amazing photo of West Wharf taken in 1893 was featured as part of a CLEMA display at Scranton Library entitled “Wonderful West Wharf.”

## Visitors Welcome

This year, CLEMA hosted visitors from throughout the U.S., including Maine, Michigan and Texas. Guests were helped with tracing their genealogy, researching local landmarks as well as studying Madison’s natural and architectural treasures.

Assisting such organizations as Scranton Library and the Madison Historical Society with their exhibits also kept CLEMA very busy.



## Recognize Any of these Veterans?

Sometimes photographs are donated to the Archives without any notation as to the identity of the individuals photographed. Such is the case with these photographs provided by Griswold Post 79 American Legion. If you recognize any of these veterans, please call the Archives at 245-5667.

CLEMA is also trying to put together a list of Madison veterans of conflicts from the Vietnam War to the present. Any help would be greatly appreciated.

*Established in 1995, the Charlotte L. Evarts Memorial Archives is a not-for-profit organization dedicated to collecting, preserving and making available for public use archival materials related to Madison, CT.*

*Visit us at 8 Meetinghouse Lane, Madison, CT 06443 or on the internet at [www.evartsarchives.org](http://www.evartsarchives.org). CLEMA's hours are: Tuesdays 7 p.m. - 9 p.m. and Fridays 10 a.m. - 1 p.m. or by appointment by calling CLEMA at (203) 245-5667.*