



The Charlotte L. Evarts Memorial Archives, Inc.

8 Meetinghouse Lane

Madison, Connecticut 06443

Telephone (203) 245-5667



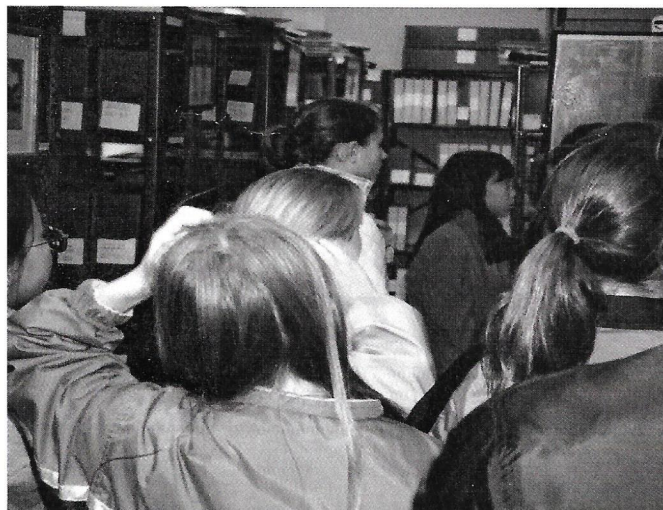
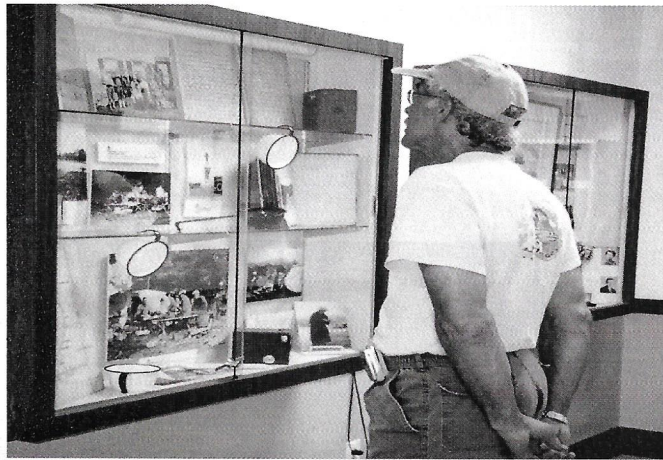
PRESERVING MADISON'S HISTORY

Established in 1995 to honor the memory of Madison's first Town Historian Charlotte L. Evarts, CLEMA is a not-for-profit organization dedicated to collecting, preserving and making available for public use archival materials related to Madison, Connecticut.

Run by an all-volunteer staff, CLEMA's offices are located in Memorial Town Hall, east of the Madison Green. The facility includes a work room, reading room and a fire-proof, climate-controlled vault with more than 500 linear feet of storage.

Computerized databases at CLEMA provide access to more than 100,000 items. Materials include: photos, maps, diaries, documents, census records, town reports, school yearbooks, postcards, local newspapers, deeds, paintings and drawings. These materials are the basis of educational presentations, programs and exhibits.

As a not-for-profit organization, CLEMA is dependent on grants and public support to carry out its ongoing mission of acquisition, preservation and public education.



(Top) Visitors study Madison's history in CLEMA's reading room. (Middle) An exhibit at Memorial Town Hall. (Left) Students tour the vault.



GOING ELECTRIC

A NEW CLEMA EXHIBIT

In spring 2010, CLEMA's exhibit space in Memorial Town Hall will feature the history of trolley service and the advent of electricity in Madison.

The display will coincide with the 100th anniversary year of the opening of the Shore Line Electric Railway Company's route through town.

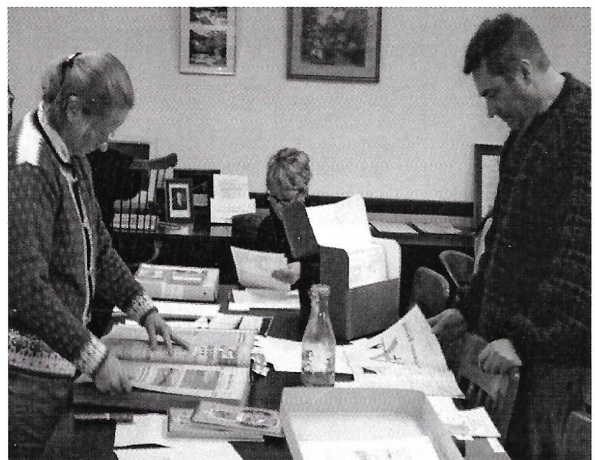
Photographs, postcards and maps will bring to life the story of this technologically advanced yet troubled line that was part of the dawning of Madison's age of electricity.

(Left, above) A trolley takes on passengers in front of Scranton Library, circa 1912. (Left) In the 1920s, the automobile was poised to outdistance the trolley as the favored mode of transportation.

VISITORS WELCOME

Each year, CLEMA hosts visitors from throughout the United States and from as far away as Europe. Guests are helped in a variety of ways such as tracing their genealogy, researching local landmarks as well as studying Madison's natural and architectural treasures.

Assisting individuals, civic groups, schools and organizations with reference services and educational programs keeps CLEMA busy. Additionally, CLEMA provides custodial care for valuable documents owned by organizations in town.



Visit us at 8 Meetinghouse Lane, Madison, CT 06443 or on the internet at www.evartsarchives.org. CLEMA's hours are: Tuesdays 7 p.m. - 9 p.m. and Fridays 10 a.m. - 1 p.m. or by appointment by calling CLEMA at (203) 245-5667.