

The Charlotte L. Evarts Memorial Archives, Inc.



CLEMA is on the Move

By Pam Landon, President

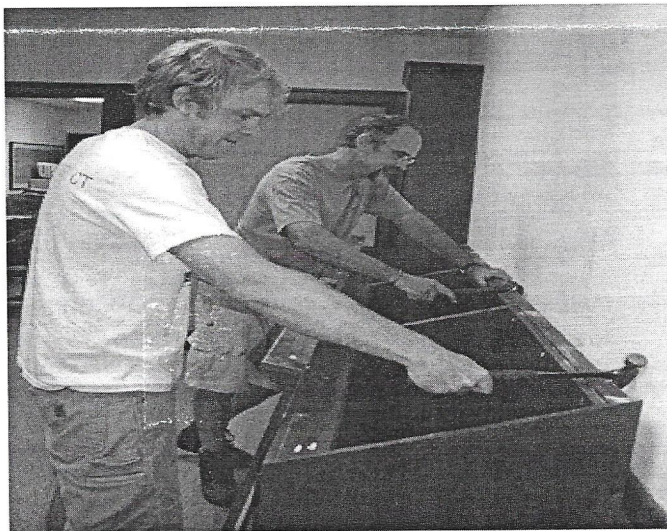
CLEMA will soon have a new home. The Archives will still be in Memorial Hall but on the lower level.

In early March, First Selectman Fillmore McPherson notified CLEMA that the Archives would have to be moved in order to accommodate the new state-mandated Madison-Guilford Probate Court. CLEMA Directors and friends attended the March 22 Selectmen's Meeting to discuss the move and to have concerns addressed.

Thereafter, a special CLEMA committee held a series of meetings with the First Selectman, other town officials and architect John Matthews. The entire Board was satisfied that the Archives' needs would be met. Most important, the condition of the downstairs vault would be brought up to the quality of CLEMA's existing vault.

CLEMA has been involved in the design of our new space from the beginning and renovations are underway. The new space will have a large research room, named for and honoring one of CLEMA's founding members and first archivist, Warner Lord. The new space will also include a work/meeting room named for the late Robert MacDonald, who brought the vision of the Archives to the town of Madison in 1994 and was also one of CLEMA's founding members.

All the "touches" that make the Archives a special place to visit such as the beautiful bookcase, leather chairs and conference table will be transported to the new location. CLEMA looks forward to sharing with you our new space in the lower level of Memorial Hall in early 2011.



Pictured: (top) CLEMA Directors; (center) the new space under construction; (left) Shane Walden and Peter Gulick of Gulick & Spradlin, L.L.C. assist with the move.

During 2010, Friends Kept CLEMA's Collection Growing

A Legacy of Stewardship: The Charles T. and Dorothy Hill Collection

Rare is the opportunity for CLEMA to add 18th and 19th century archival materials to its holdings, but that's just what happened this spring thanks to Donald Epifano who donated the Charles T. and Dorothy Hill Collection to CLEMA. The gift of 140 items such as deeds, letters and wills has provided invaluable knowledge about early settlers and the development of the town.

What prompted such a thoughtful act of generosity? Donald explained that when he and his wife moved to Trumbull, they became friends with neighbors Dorothy Hill and her sister Kate. Dorothy was the widow of Charles Hill whose family had resided in East Guilford, now Madison. He had amassed these documents over the years. When Dorothy died, Kate gave them to Donald because she knew him to be a history enthusiast. Donald decided to gift the collection to CLEMA so that it could be preserved as well as be available for study by historical researchers.

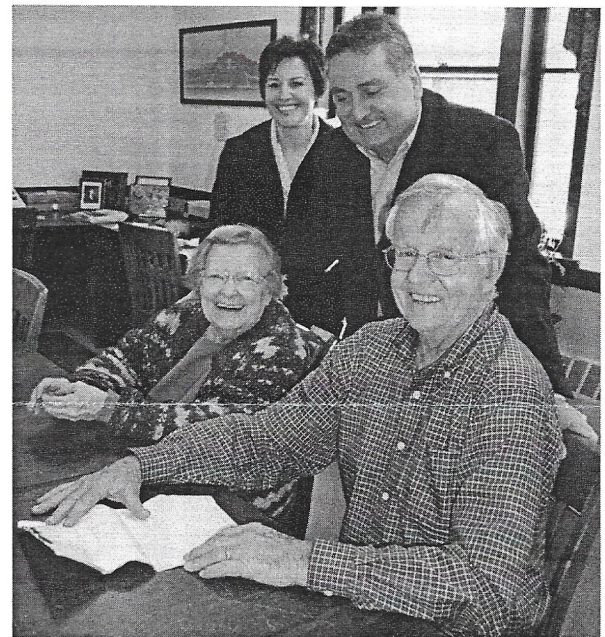
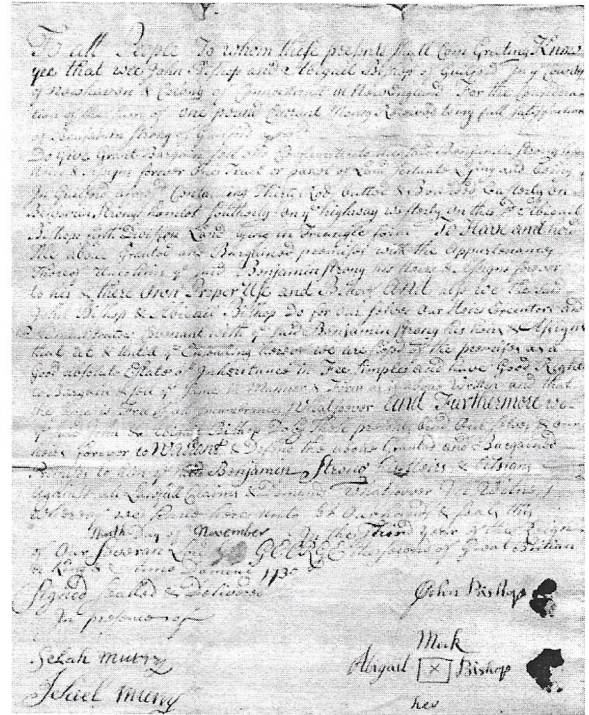
"If they ended up in a collector's, hobbyist's or organization's closet never studied by a qualified historian after I turned away, that would break my heart," noted Donald in an e-mail.

CLEMA did not disappoint Donald. Director Warner Lord took on the task of studying this material. He provided a brief sampling of the discoveries he has made thus far:

"The story begins with the earliest deed, dated 1709, when Nathaniel Allis sold 20 acres at Fence Creek to Benjamin Strong. Benjamin Strong was a weaver with close ties to the Jonathan Murray family whose homestead still stands on Scotland Road. Jonathan Murray emigrated from Scotland to Madison in the 17th century. Selah Murray, son of Jonathan, referred to Benjamin Strong as 'uncle.'"

The story continues: Jonathan Murray's grandson, Selah Murray II, married Lois Wilcox. Together, they had a daughter, Lydia Murray. She married Abraham Hill. This marriage united the Hill and Murray families, explained Warner. Abraham and Lydia's son, Pardon Hill, married Sally Bishop. Sally is a descendent of the Bartlett, Meigs and Bishop families.

Warner concluded, "The Hill family seems to have been custodians of the extended family's records over time. Pardon Hill's sons, Charles W. Hill and Edward Hill passed the records along to their descendants."



Pictured: (top) A 1730 deed from John & Abigail Bishop to Benjamin Strong; (above) Kate Saunders, Laura Epifano, Donald Epifano and Warner Lord.

Please keep CLEMA growing through monetary donations,

Diaries • Documents • Reports • Letters • Journals • Menus • Posters • Bulletins • Brochures

and Growing... and Growing...and Still Growing

Full Speed Ahead

While much of the year was focused on preparing for our pending move, CLEMA's all-volunteer staff continued the work of the archives: collecting and preserving material related to the history of Madison and sharing it with the public.

From Florida to Michigan, visitors made their way to the Archives. Interests were numerous, including genealogy and local architecture.

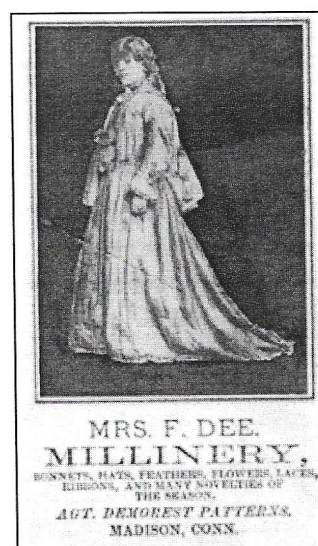
In March, a reception was held honoring long-time CLEMA Directors Warner and Carol Lord. All wished the couple a happy retirement in Maine.

Springtime was presentation time as the Border Arts Club stopped by on May 18 for an evening presentation entitled "What's in the Vault?"

Speaking of the vault, the space continues to fill. So far, more than 1,000 archival items have been donated this year. They include a Griswold Airport poster; a biography of C. S. Bushnell; scans of Low family scrapbooks; Madison Little League photos; Sunshine Society minute books; numerous postcards (including one of Bonoff's Theatre), a history of Madison Lodge No. 87, A.F. & A.M.; Red Cross awards honoring Phyllis Benson; a collection of material about Dianne Bullis Snyder; and an advertisement for Mrs. Dee's Millinery.

This summer, CLEMA welcomed a new volunteer, Loma Corcoran, who immediately set to work on projects including inventorying real estate locator cards.

Throughout the year, and especially this autumn, volunteers have been hard at work lending assistance to organizations, businesses, and individuals requiring research into Madison's past. Among them are: the Madison Historical Society, Friends of Hammonasset and Friends of Scranton Library.



volunteer work and gifts of archival materials.

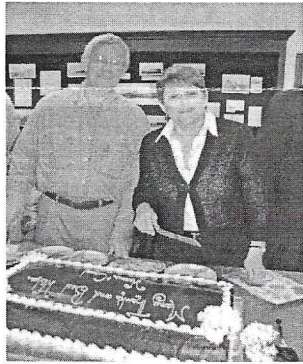
Pamphlets • Photographs • Books • Guides • Postcards • Maps • Autobiographies • Memoirs

On the Record

Madison is constantly changing. One of CLEMA's many activities is to photograph this evolution so milestone events are recorded and preserved for future generations. This year, Grange Hall was demolished to make way for a new Senior Center. Until recently, the Depot (right) had been serving this function. Soon, the Depot will make way for a new ambulance building.



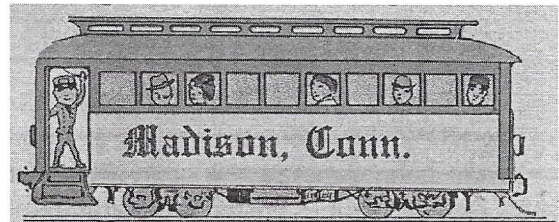
Thank You



A reception was held in March to thank Warner and Carol Lord for their many years of service to CLEMA.

Trolley Schedule

The pending move de-railed plans to unveil CLEMA's trolley exhibit in 2010. When our move is complete, we will schedule the opening of this display, which highlights in photos, postcards and maps the story of this technologically advanced yet troubled line that was part of the dawning of Madison's exciting age of electricity.



Rev. Samuel Fiske

Imagine That

Did you know the year 2011 marks the 150th Anniversary of the beginning of America's Civil War? Back then, Madison's population numbered about 1,865 people of which some 166 served in the military. By war's end, 41 of these brave soldiers had perished. One of the casualties was Rev. Samuel Fiske, the fifth pastor of the First Congregational Church of Madison. Fiske chronicled his war experiences in numerous letters and newspaper articles that were later published in a book entitled *Dunn Browne in the Army*. CLEMA invites you to learn more about Madison's role in the Civil War as well as other Madison-related topics by visiting the Archives.

Established in 1995, the Charlotte L. Everts Memorial Archives is a not-for-profit organization dedicated to collecting, preserving and making available for public use archival materials related to Madison, CT. Visit us at 8 Meetinghouse Lane, Madison, CT 06443 or on the internet at www.evartsarchives.org. CLEMA's hours are: Tuesdays 7 p.m. – 9 p.m. and Fridays 10 a.m. – 1 p.m. or by appointment by calling CLEMA at (203) 245-5667.