



The Charlotte L. Evarts Memorial Archives, Inc.

CLEMA Gets a Web-Lift!

Quickly advancing technology has made the CLEMA web site seem as historic as its documents. Time for a web-lift! Over the past year the Technology committee looked at ways to update the site. At first it was attempted to “fix” broken links and “update” the site but that became too daunting of a task for a volunteer organization. The decision was made to out-source. Several companies were contacted and finally *LT Creative* from Wallingford, CT was chosen to create a new site. The advances will be remarkable!

The web site will feature a new look, fresh pages, additional links, and even an interactive 3-D image carousel, provided by Rich Parri of *ImageAmmo*. Our goal is to appeal to genealogical researchers nation-wide, Madison history buffs, and encourage school age children to visit our site. It is a sampling of pictures, one page histories from our collection and a virtual store front for all of CLEMA’s publications, including our new book *Postcards of Yesteryear*. Purchasing our books for gifts or your own library will be made easier with the addition of online shopping and PayPal payment option.

To learn more about the Charlotte L. Evarts Memorial Archives and Madison’s history, visit our new page at: evartsarchives.org or stop in to visit. The new site will be up and running in early 2014.

HISTORY PARTNERS

In early spring, CLEMA hosted the fourth lecture of the Madison Historical Society’s “Frederick Lee Lectures”. Archives’ Board member Robert C. Gerard presented *Postcards from the Shore, 1900-1950* to a full house. A PowerPoint presentation of Madison’s change from primarily an agricultural community to a beach and vacation destination was the theme. Railroads, trolleys, and automobiles contributed to increased population and development of cottages, hotels and restaurants along the shoreline. Actual postcards from the CLEMA collections provided images dating from 1905 to 1958, including personal notations of travelers.



Charlotte L. Evarts 1916-1994



*Postcard of Hammonasset House
from the CLEMA database.*

Madison Then & Now

Visit the lower level of Memorial Hall to view our latest exhibit *The Business of Change*. Completed for public viewing in February it also coincided with our *Postcards of Yesteryear* book launch open house. The images from the 1940s to 2013, along with historical captions, reflect changes along Boston Post Road businesses. You may not have known that Cohen's Bagels was once a lumberyard. Or that Donahues was formerly Vicky's Corner and before that The Willows. Did you know there were two car dealer ships in the center of Madison? The center of town underwent considerable changes over the last 70 years, including the infamous Jolly's fire of 1985. Come check out our display and see for yourself.

Since our exhibit was posted, there was a fire downtown claiming the building that housed Village Pizza and the Madison Wine Shop, June 20, 2013. With plans to rebuild, this proves history happens every day!



Courtesy of Phil Janssen

Established in 1995, the Charlotte L. Evarts Memorial Archives is a not-for-profit organization dedicated to collecting, preserving and making available for public use archival materials related to Madison, CT. Visit us at 8 Meetinghouse Lane, Madison, CT 06443 or on the internet at www.evartsarchives.org. CLEMA's hours are: Tuesdays 7 p.m. - 9 p.m. and Fridays 10 a.m.- 1 p.m. or by appointment by calling CLEMA at (203) 245-5667.

News From the Vault

CLEMA continued its role as a research center for Madison history. Visitors hailed from all over Connecticut and as far away as Texas, Michigan, Florida and New Mexico. Topics investigated included: Thomas Chittenden, the Revitalization Corps., Samuel Meigs house, the "fish house," and town restaurants. We even helped a college student achieve her genealogist's certificate!

Education programs took front seat in 2013. CLEMA's "The Business of Change" exhibit debuted in February, featuring vintage images of businesses along the Boston Post Road. CLEMA provided a PowerPoint program, research and an image loan to support The Madison Historical Society's Summer Colony exhibit. To support the Chamber of Commerce's Fashion Affair at the Mercy Center, CLEMA made and presented displays of businesses from years past as well as provided an exhibit of the Mercy Center's early history. This spring, the Archives held a program focused on primary source materials for Madison's fifth graders. In October, CLEMA participated in the Chamber of Commerce's scarecrow contest. CLEMA's scarecrow saluted Madison's Nina Wilcox Putnam who was a co-screenwriter for the 1932 horror film "The Mummy," starring Boris Karloff.

CLEMA's Reading Room saw the addition of new oak bookcases, which currently house more than 100 volumes of genealogical and Madison history-themed books. The library has since been dubbed the "George Gould Library," in memory of this longtime friend and supporter. A new laptop was purchased, providing internet access for added research capabilities.

Accessions were numerous in 2013, including images of the 1938 hurricane; a framed photograph of the re-dedication of Memorial Hall; Stop Griswold Overdevelopment files; Hull family portraits; The E.S. Montgomery Collection from American Legion Griswold Post #79; as well as "Tiger Pride: The Story of Hand Football" DVD; and the Madison Newcomers Club 2011-2012 scrapbook.

In addition, CLEMA continues to photograph local events and changes to the town landscape.

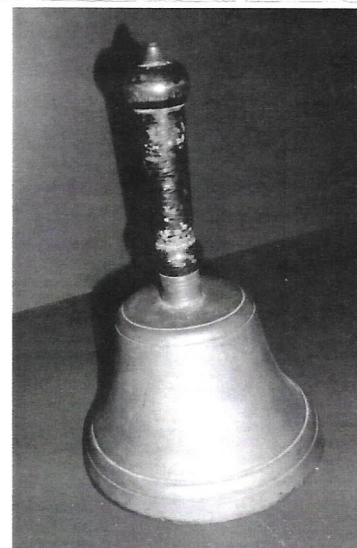


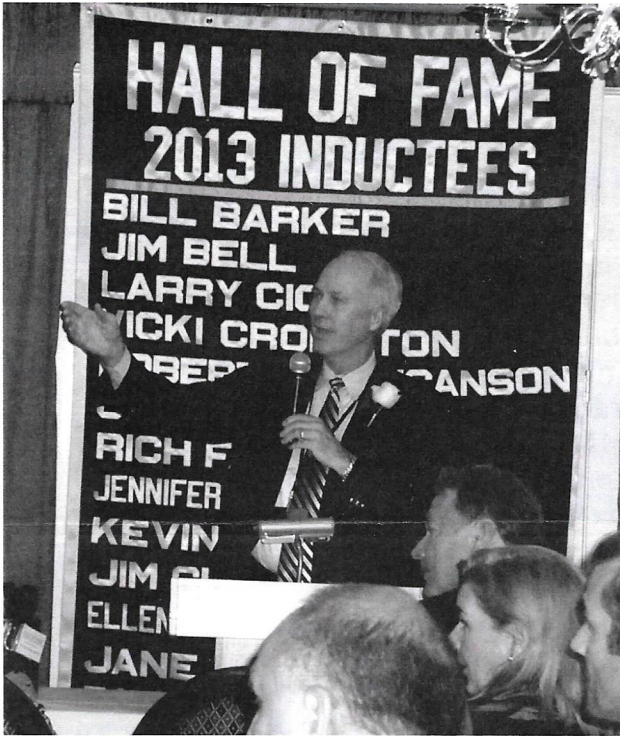
1938 Hurricane photo donated by Betsey Borden



Madison Hose Co. #1 donated by Hull Family

Bell used at the Hammonasset House (see image page 1) to call shipyard workers at East Wharf to meals. Donated by Hull family.





History Win - Win

CLEMA chalked up a big assist when the Madison Athletic Hall of Fame inducted its inaugural class this year.

To help with inductee biographies, the Archives made available research materials from news articles to yearbooks, letters and more. Images were loaned for programs and posters. Additionally, CLEMA suggested and successfully advanced the candidacy of the late Walter "Pop" Polson to be one of the 21 inductees. Finally, CLEMA was present September 13 at the Madison Beach Hotel to photograph this ground-breaking event.

Congratulations to all the inductees!

Just in Time for the Holiday Gift Giving Season . . .

Postcards of Yesteryear: An illustrated collection of postcards from Madison, CT.

\$20.00

Published by CLEMA this 84 page soft cover book is filled with over 150 nostalgic color images of postcards from Madison. Short descriptions tell the stories and details of each card. Neatly categorized into ten chapters, this book is a sampling of our collection.

Other books available:

Madison Connecticut in the Twentieth Century. **\$20.00**

This 128 page soft cover book has 200 black-and-white images with captions outlining the growth and changes of Madison during the years 1900 through 1998.

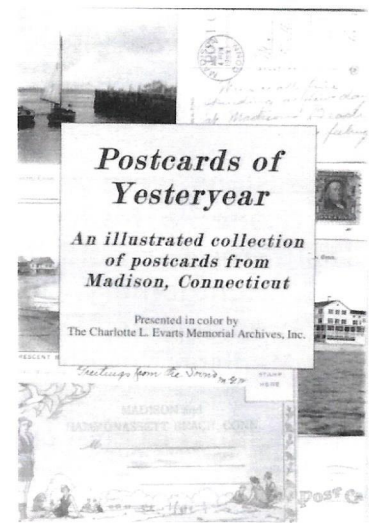
The Green People. A Waking Tour of the Green. Madison, CT. **\$10.00**

Readers are taken on a lively walking tour of the historic homes and buildings that surround the Madison Green. Details focus on the builders, residents, history and lore behind some of the town's oldest architectural treasures.

Madison Hose Co. No. 1 Apparatus & Firehouse History 1907-2007 A Century of Volunteers. **\$20.00**

Filled with news articles and over 150 color and black-and-white images, this book details every apparatus used by the department during its first 100 years, as well as former pieces privately owned. Also included are images and histories of the Firehouses utilized by the Hose Company to house their equipment.

The History of North Madison Connecticut Revised and Enlarged Plus Reference Materials. **\$20.00**



To purchase your books, contact us at: evartsarchivessales@gmail.com, 203-245-5667
or by mail at 8 Meetinghouse Lane.

*Gift wrapping and local deliveries available.