



The Charlotte L. Evarts Memorial Archives, Inc.

20th Anniversary Calendar Project

In recognition of CLEMA's 20th anniversary a committee was formed to create a calendar of old and new images of Madison with short informational captions, to be sold as a fundraiser. The Committee consisted of Fred Murphy, Marcia Sokolnicki, Henry Griggs, Chris Jennings Penders, Carol Blackwood, and Robert Gerard as Chairman. The first organizational meeting was held in April when each committee member was assigned two months. As locations were selected each member researched our database for information and photos. Several meetings were held over the following months to collaborate on the flow of the calendar and to cull and edit the data. Many hours were spent creating a paste-up of the images and captions to send to Essex Printing where they added their final creative touch to the committee's work.



We are pleased to offer this calendar for sale at \$10 each. They are available during CLEMA's open hours on Tuesday evenings and Friday mornings. This 2015 calendar will make a nice gift idea as the holidays approach.

Additional publications are available on CLEMA's website www.evartsarchives.org and at the archives.

July features the West Wharf and April the Former Lutheran Church

The Ever-Changing Town of Madison

We here at the Charlotte L. Evarts Memorial Archive always like to remind people that current events are tomorrow's history. At CLEMA we have spent 20 years collecting images and information about Madison for future generations to look back at. One of the changes in Madison during 2014 was the completion of "Salt Meadow Park", Madison's newest recreation fields and open space. Converted from the former Griswold Airport, the park is located at 1362 Boston Post Road. Opening day was Saturday, September 13, 2014.



Many aviation buffs will remember Griswold Airport on Boston Post Road as a fairly busy small-town airport housing private aircraft for several decades until it was closed in 2007. The original airport was located near New Road.

Some recollections of the airport include biplane and glider flights, as well as advertising banners being hitched on-the-fly by small aircraft. There were many accidents at and around the airport over the years, including a fatality during an airshow in 1983. Many small and experimental aircraft, including motorized "para-gliders", used the airport as a take-off point until its closure.

One unique incident took place on April 13, 1988 when a Navy SH-2F Seasprite helicopter from the former Naval Air Station in South Weymouth, MA landed with engine problems. After repairs were completed Madison Hose Company was called to the scene to standby with a charged foam line from Engine 2-5-2 in case of a fire when the helicopter powered up again.

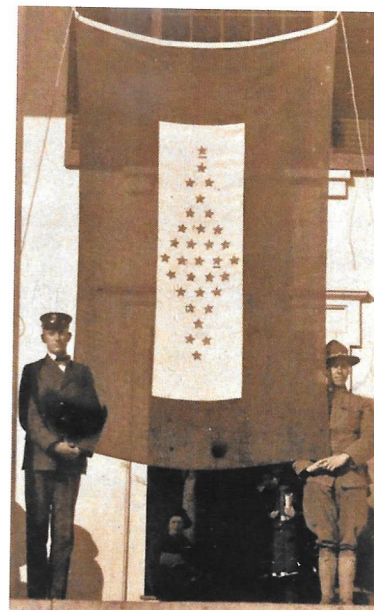
We hope we have brought back some memories, and as always if you have any old photos or memorabilia of Griswold Airport or Madison in general that you would like to share, donate, or allow us to scan into our database, please visit us during open hours!!



Griswold Airport 1984

New Exhibit

This spring, join the Evarts Archives as we explore Madison during the first World War in an exhibition of compelling images, letters, diary entries and artifacts known as "Over There, Over Here." CLEMA looks forward to sharing with you the fruits of our fascinating research which we have conducted over the course of this past year. Check our website for details as to the exhibit's opening date. Pictured is Madison's World War I Service flag as seen on December 2, 1917.



From the Vault



Archives' volunteers chronicled the last days of the historic Samuel Stone Meigs house. Located at 586 Boston Post Road, the structure had been home to Madison's last surviving Civil War veteran, Charles Hinman. Although the house was razed in April, images taken of this home by CLEMA volunteers will preserve its memory for future generations.

Furthering our educational mission, CLEMA hosted public school fifth graders who learned about primary source materials through CLEMA's PowerPoint presentation "Madison during the Civil War." Also in the springtime, the Archives assisted college students who were researching the town's political history and landmarks. During the summer, owners of houses on MHS's Remarkable Homes Tour uncovered stories about their dwellings from articles, maps, letters and diaries found at CLEMA.

In August, our office took on a new look with three new filing cabinets gifted by Linda Emmons. Currently the cabinets are being filled with reference materials to enhance public research.

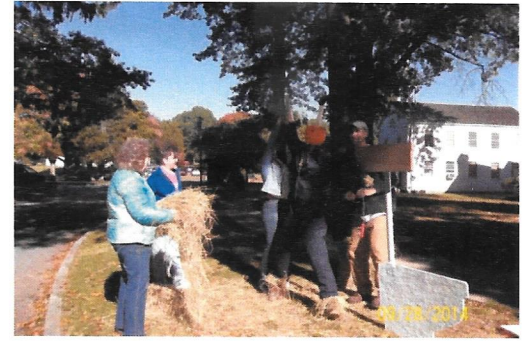
As summer turned to autumn, CLEMA once again assisted the Madison Athletic Hall of Fame by making available news articles and yearbooks to support biographies of this year's inductees. Also, CLEMA welcomed members of DHHS's Class of 1964, who were celebrating their 50th Reunion.

Thanks to concerned members of the public, donations of letters, journals, menus, photographs and other materials have arrived at a steady pace in 2014. A sampling of accessions shows: 17 Newcomers Club scrapbooks, a collection of DHHS *Hand Print* newspapers, Eleanor Schumann Wimble's Kiddie Kraft Nursery School scrapbooks, Shoreline Gardeners Club minutes, sketches of Winter Club past presidents, Wilcox family materials as well as minutes recording the founding of Concord Meadows.

Established in 1995, the Charlotte L. Evarts Memorial Archives is a not-for-profit organization dedicated to collecting, preserving and making available for public use archival materials related to Madison, CT. Visit us at 8 Meetinghouse Lane, Madison, CT 06443 or on the internet at www.evartsarchives.org. CLEMA's hours are: Tuesdays 7 p.m. - 9 p.m. and Fridays 10 a.m. - 1 p.m. or by appointment by calling CLEMA at (203) 245-5667.

Joining in the Fun!

CLEMA volunteers got into the holiday spirit by joining the Chamber of Commerce's Scarecrow competition. One hundred years ago Memorial Town Hall was graced with its very first indoor toilet. In honor of that anniversary, Percy the Plumber was created.



Madison Diaries, Photographs, Postcards at Your Fingertips

What would it be like to go back in time in Madison? To see what people wore, where they lived, what they did in good times and bad? Whether you have family, friends or just want to see Madison life, visit the bright, comfortable Charlotte L. Evarts Memorial Archives located on the Green in Madison. You can read old issues of the Shore Line Times and see ads from businesses that have long since vanished. You can look at maps and read annual reports to see how the town has changed.

If you have photos, maps, postcards, etc. of life in Madison and don't know what to do with them, you may donate them to the Archives. Or, a volunteer can scan your items so that copies can be added to the collection and you can keep your originals. Generous donations throughout the years, starting with those from Charlotte Evarts herself, have made the collection what it is today.

Volunteers are not only helpful but also enthusiastic. They can search for answers to your questions using the well-cataloged collection. This is where they want to be and they want to share the Archives with you. Throughout the year, ongoing programs of research and preservation advanced. An especially important activity conducted by CLEMA volunteers is transcribing handwritten letters and documents. This program is vital as the use and teaching of cursive writing is diminishing in society and schools today.

Visitors come from all over the country, as well as out of the country, because, as we know, there is only one Madison, Connecticut in the world!

Tree-Lighting Celebrates Centennial

The year 2014 marks the 100th anniversary of the first outdoor community Christmas tree-lighting ceremony in Madison. The original event took place on Thursday, December 24, 1914 at 7:30 p.m. On the timeline of town history, it follows the introduction of electricity with the advent of trolley service in 1910, and the installation of Madison's first electrified street lights in 1912. Members of the First Congregational Church's Sunday school proposed the idea for the public outdoor tree-lighting ceremony. Plans were made at a December 10 town-wide meeting. In the days which followed, a suitable local tree was selected. It was then positioned on the Green, south of what is today 10 School Street. The tree was adorned with strings of lights and decorations. Adding to the display was an electrified, star-shaped frame, which was located near the tree. As snow fell that Christmas Eve, the tree's lights were switched on, fascinating all who attended. After carols were sung around the Christmas tree, residents gathered for hot coffee and donuts. Interestingly, Madison's tree-lighting ceremony predated by nine years the first outdoor national Christmas tree-lighting event, which took place on the White House lawn in 1923. Madison's tree lighting ceremony continues today, usually the first Sunday in December.